

Aspirating Smoke Detector (including SSD 31)



SEC-ASD-531 1 Sampling pipe / Detector

The SecuriRAS SEC-ASD-531 aspirating smoke detector is designed for smaller monitoring areas and for the easiest possible handling. The SEC-ASD-531 is equipped with a highly sensitive smoke sensor SSD 31 using a single sampling pipe network. The housing provides the option for two expansion modules. Commissioning and configuration is done directly on the device without any software tool. For planning the ASD PipeFlow software allows an optimized design of any installation.

Technical data

Mains voltage:	14 to 30 V DC
Ambient temperature:	-10 °C to + 55 °C
Protection class:	IP 54
Dimensions (H x W x D) :	195 x 290 x 140 mm
Case cover material:	ABS-Blend, UL 94-V0
Case Colour:	grey/anthracite
Weight:	1,95 kg
Standards:	EN 54-20 Class A, B and C, EN 54-27 UL 268, FM 3230
Maximum sampling pipe length:	75 metres
Monitoring area:	720 m ²
Application:	Single IT racks, small tele-communications containers, elevator shafts, clean rooms, false ceilings etc.

Aspirating Smoke Detector



SEC-ASD-532 1 Sampling pipe / Detector, 1 Smoke level display

The SecuriRAS SEC-ASD-532 aspirating smoke detector is designed for small to midsize monitoring areas. The SEC-ASD-532 base unit is provided for a highly sensitive smoke sensor SSD 532 (to be ordered separately) for a single sampling pipe network. The measured smoke level is indicated on a bar graph display. The housing provides the option for two expansion modules. Commissioning and configuration is done either directly on the device or via the ASD Config software tool. For planning the ASD PipeFlow software allows an optimized design of any installation.

Technical data

Mains voltage:	14 to 30 V DC
Ambient temperature:	-20 °C to + 60 °C
Protection class:	IP 54
Dimensions (H x W x D) :	195 x 290 x 140 mm
Case cover material:	ABS-Blend, UL 94-V0
Case Colour:	grey/anthracite
Weight:	1,7 kg
Standards :	EN 54-20 Class A, B and C, EN 54-27
Maximum sampling pipe length:	120 metres
Monitoring area:	1280 m ²
Application:	Elevator shafts, prison cells, clean rooms, laboratories, IT racks, tele-communications, facilities etc.

Aspirating Smoke Detector



SEC-ASD-535-1



SEC-ASD-535-2



SEC-ASD-535-3



SEC-ASD-535-4

- SEC-ASD-535-1** 1 Sampling pipe / Detector
- SEC-ASD-535-2** 2 Sampling pipes / Detectors
- SEC-ASD-535-3** 1 Sampling pipe / Detector, 1 Smoke level display
- SEC-ASD-535-4** 2 Sampling pipes / Detectors, 2 Smoke level displays

The SecuriRAS SEC-ASD-535 aspirating smoke detector is designed for universal applications mainly for midsize to large monitoring areas. The SEC-ASD-535 base units provide space for 1 or 2 highly sensitive smoke sensors SSD 535 (to be ordered separately) for 1 or 2 sampling pipe networks. The measured smoke level can be indicated on a bar graph display (models -3 and -4). The housing provides the option for four expansion modules. Commissioning and configuration is done either directly on the device or via the ASD Config software tool. For planning the ASD PipeFlow software allows an optimized design of any installation.

Technical data

Mains voltage:	10.5 to 30 V DC
Ambient temperature:	-30 °C to + 60 °C
Protection class:	IP 54
Dimensions (H x W x D) :	397 x 265 x 148 mm
Case cover material:	ABS-Blend, UL 94-V0
Case Colour:	grey/anthracite
Weight:	3,85 kg
Standards:	EN 54-20 Class A, B and C
VdS-Approval:	G 208154
Noise level:	32 dBA: extremely low noise levels
Maximum sampling pipe length:	300 metres
Monitoring area:	5760 m ²
Application:	High-bay and deep-freeze warehouse, large data centres, historic buildings, large/high halls etc.



Smoke Sensor for SEC-ASD-531

SEC-SSD-31 Alarm Sensitivity range
0,02% – 10% /m

The smoke sensor SSD 31 is pre-installed in the SEC-ASD-531 and is also available also as replacement part. 3 Pre-signals are set on a fixed percentage of the alarm threshold (30/50/70%).

Technical data

Sensitivity range alarm:	0.02 %/m – 10 %/m
Sensitivity range pre-signals:	0.006 %/m – 7 %/m
Ambient temperature:	-10 °C to + 55 °C
Dimensions (H x W x D):	120 x 116 x 95 mm



Smoke Sensor for SEC-ASD-532

SEC-SSD-532-3 Alarm Sensitivity range
0.02% – 10% /m

The smoke sensor SSD 532 has to be ordered separately for the SEC-ASD-532.
3 Pre-signals can be set between 10 and 90% of the alarm threshold.

Technical data

Sensitivity range alarm:	0.02 %/m – 10 %/m
Sensitivity range pre-signals:	0.002 %/m – 9 %/m
Ambient temperature:	-20 °C to + 60 °C
Dimensions (H x W x D):	120 x 116 x 95 mm



Smoke Sensor for SEC-ASD-535

SEC-SSD-535-3 Alarm Sensitivity range
0.02 – 10% /m

The smoke sensor SSD 535 has to be ordered separately for the SEC-ASD-535.
Pre-signals can be set between 10 and 90% of the alarm threshold.

Technical data

Sensitivity alarm:	0.02 %/m – 10 %/m
Sensitivity range pre-signals:	0.002 %/m – 9 %/m
Ambient temperature:	-30 °C to + 60 °C
Dimensions (H x W x D):	120 x 136 x 95 mm



Fastener plate to cover a smoke sensor chamber

SEC-ASD-535-Verschl

The fastener plate is for closing the 2nd channel when it is temporarily not used. (e.g. Conversion of a room)

The packaging unit of the fastener plate is 50 pieces.

PVC FITTINGS



Compressed-air connection

SEC-CC-25-PVC

Compressed-air connection for tube
TU 25 PVC for cleaning the aspirating tube.

Technical data

Material:	PVC
Colour:	grey
Diameter:	25 mm



Ventilation duct flange

SEC-DF-25-PVC

Flange for tube TU 25 PVC for the monitoring of ventilation ducts.
Per duct 3 pieces of DF 25 PVC are required, 2 for the aspirating stub,
1 for the air recirculation.
Please consider the planning hints.

Technical data

Material:	PVC
Colour:	grey
Diameter:	25 mm



Loop I/F module for SEC-ASD-535

SEC-SLM-35 SecuriLine standard

This loop interface brings faults and alarms to your fire alarm panel and lets you reset the SEC-ASD-535 by the panel. Note: SEC-ASD configuration is done via USB using ASD config software and a PC. The module comes with mounting brackets, screws and ribbon cable.

Technical data

Dimensions (H x W x D) :	95x58x17 mm
Weight:	56 g



Relay I/F module for SEC-ASD-535

SEC-RIM-35 5 relays with changeover contacts

The RIM 35 brings five (5) additional relay outputs to your SEC-ASD-535. Expansion limit is two (2) RIM 35 / 10 relays. Each relay can be assigned to any ASD event by programming with the ASD Config software. The module comes with mounting brackets, screws and ribbon cable.

Technical data

Max. relay output load:	50 / 1 / 30 V DC/A/W
Dimensions H x W x D) :	95x58x17 mm
Weight:	85 g



Relay I/F module for Special Fire Detectors

SEC-RIM-36

The RIM 36 brings five (5) additional relay outputs to your Special Fire Detector (except SEC-ASD-535). Expansion limit is two (2) RIM 35 / 10 relays. Each relay can be assigned to any ASD event by programming with the SEC-ASD Config software. The module comes with mounting brackets, screws and ribbon cable.

Technical data

Max. relay output load:	50 / 1 / 30 V DC/A/W
Dimensions (H x W x D) :	95x58x17mm
Weight:	85 g



Memory card module for SEC-ASD-535

SEC-MCM-35

This Memory Card Module lets you trace up to 16 Million events and stores analogue values like smoke concentration and airflow of at least 83 days depending on the log interval. The module comes with mounting brackets, screws and ribbon cables and SD-Industrial memory card.

Technical data

Dimensions (H x W x D) :	95x58x17 mm
Weight:	43 g



SD-Card Industrial 2GB

SEC-SD-Industrial

SD memory card (industrial) 2GB to use with MCM 35 or directly on-board in SEC-ASD-531 (AMB 31) and SEC-ASD-532 (AMB 32).

Technical data

Memory:	2 GB
Temperature range:	- 40°C - + 85°C



Serial I/F Module networking of Special Fire Detectors

SEC-SIM-35

For the RS 485 networking of up to 250 Special Fire Detectors like SEC-ASD-535 or SEC-ASD-532. Using the "ASD Config" configuration software, all SEC-ASDs in the network can be visualised and configured from a PC. The module comes with mounting brackets, screws and ribbon cables.

Technical data

Dimensions (H x W x D) :	95x58x17 mm
Weight:	56 g



Serial Master Module for networking of Special Fire Detectors

SEC-SMM-535

This interface connects the RS485 (over SIM 35) networked SEC-ASDs to a USB port of a PC. It is powered by the USB port.

Technical data

Power Supply:	USB powered / 5 VDC
Operating temperature:	-30°C to +60°C
Dimensions (H x W x D):	82x89x55 mm
Weight:	165 g

SEC-ASD planning and calculation software

SEC-ASD-PipeFlow

Planning and calculation software for planning symmetric and asymmetric sampling pipe topologies. (Subject to licence)

Technical data (requirements)

Operating system:	Windows XP / 7 / 8.1
RAM:	1 GB
Hard disc space required:	50 MB



SEC-ASD configuration tool license with USB Dongle

SEC-D&PL_ASD-Conf_N Dongle & Partner License ASD Config Networking



SEC-ASD configuration tool license with USB Dongle

SEC-D&PL_ASD-Conf Dongle & Partner License ASD Config



USB 2.0 cable for connection between SEC-ASD-535 and PC

SEC-KAB-USB-45

USB 2.0 cable for connection between SEC-ASD-535 and PC for commissioning and maintenance via ASD Config

Technical data

Length:	4.5m
Type:	A-B

SAMPLING POINTS



Sampling hole clip

SEC-Clip x.x PA

SEC-CLIP 2.0 PA

SEC-CLIP 2.5 PA

SEC-CLIP 3.0 PA

SEC-CLIP 3.5 PA

SEC-CLIP 4.0 PA

SEC-CLIP 4.5 PA

SEC-CLIP 5.0 PA

SEC-CLIP 5.5 PA

SEC-CLIP 6.0 PA

SEC-CLIP 6.5 PA

SEC-CLIP 7.0 PA

* Also available in white

Sampling hole on aspirating pipe (clip). Available with different diameter according to the project data.

Only for PVC and ABS pipes with 25 mm diameter
Packaging unit: 10 pieces

Technical data

Hole diameter	Type
2.0 mm	SEC-CLIP 2.0 PA
2.5 mm	SEC-CLIP 2.5 PA
3.0 mm	SEC-CLIP 3.0 PA
3.5 mm	SEC-CLIP 3.5 PA
4.0 mm	SEC-CLIP 4.0 PA
4.5 mm	SEC-CLIP 4.5 PA
5.0 mm	SEC-CLIP 5.0 PA
5.5 mm	SEC-CLIP 5.5 PA
6.0 mm	SEC-CLIP 6.0 PA
6.5 mm	SEC-CLIP 6.5 PA
7.0 mm	SEC-CLIP 7.0 PA



Maintenance clip

SEC-Clip-REV PA

Clip without hole for revision purpose.
Packaging unit: 10 pieces

Technical data

Pipe connection:	25 mm
Material:	PA



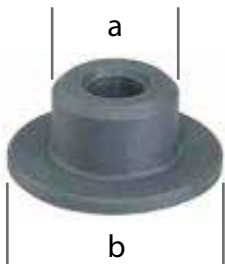
Sampling-funnel

SEC-SF-ABS

Sampling-funnel for tubes TU 25XXX. For sampling points exposed to high air current like monitoring of server racks or air conditioners.

Technical data

Pipe connection:	25 mm
Hole diameter:	5 mm
Material:	ABS



Rosette for sampling tube stiff

SEC-SP-36-PVC

SEC-SP-36-ABS

For tubes TU 25 PVC/ABS to create the sampling point type "sampling tube stiff with rosette". Has to be glued into the tubes TU 25 PVC or ABS. Various outer diameters (b) on demand available.

Technical data

Diameter a:	21.5 mm
Diameter b:	36 mm
Material:	PVC / ABS
Packaging unit:	10 pieces



Sampling point for ceiling duct

SEC-SP-M20-PVC

SEC-SP-M20-ABS

Sampling point for ceiling ducts to connect flex sampling pipe (FT 21 PA.). To connect the flex sampling pipe FT 21 PA. Inclusive self sealing coupling SC 20ST PA.

Technical data

Material:	PVC / ABS
Colour:	white / grey
Diameter:	M20, 36mm



Sampling point for ceiling duct (Set)

SEC-SP-M20-PVC-Set

SEC-SP-M20-ABS-Set

Sampling point for ceiling ducts. Complete set incl. T-Piece TP 25XXX, flex sampling pipe (FT 21 PA) and sampling point (SP M20 XXX).

Technical data

Material:	PVC
Length sampling stub:	0.8 m



Sampling point Capillary (set)

SEC-SP-TU6-PVC-Set

To create the sampling point type "Capillary". Complete capillary tube-set for the installation in sampling pipes TU 25 PVC. Incl. T-piece TP 25 PVC, reduction RE 25-6 PVC and capillary stub 1.5m.

Technical data

Length:	1.5 m
Colour:	gray, RAL 7011
Diameter outside:	6 mm
Diameter inside:	4 mm

Sampling point with heating



- SEC-HEAT-3.0-PVC** red
- SEC-HEAT-3.5-PVC** blue
- SEC-HEAT-4.0-PVC** green
- SEC-HEAT-4.5-PVC** black
- SEC-HEAT-5.0-PVC** brown

To install the aspirating pipe in deep-freeze rooms to prevent the freezing of the aspirating holes. HEAT X.X is the relevant diameter for SEC-ASD PipeFlow-calculations (3.0/3.5/4.0/4.5/5.0mm)

Technical data

Pipe connection:	25 mm
Hole Diameter	Type
5,7 mm	HEAT 3.0 PVC
6,1 mm	HEAT 3.5 PVC
6,3 mm	HEAT 4.0 PVC
6,7 mm	HEAT 4.5 PVC
7,1 mm	HEAT 5.0 PVC

Sampling point with heating



- SEC-HEAT-3.0-ABS** red
- SEC-HEAT-3.5-ABS** blue
- SEC-HEAT-4.0-ABS** green
- SEC-HEAT-4.5-ABS** black
- SEC-HEAT-5.0-ABS** brown

Same as HEAT X.X PVC but in ABS.

Technical data

Pipe connection:	25 mm
Hole Diameter	Type
5,7 mm	HEAT 3.0 ABS
6,1 mm	HEAT 3.5 ABS
6,3 mm	HEAT 4.0 ABS
6,7 mm	HEAT 4.5 ABS
7,1 mm	HEAT 5.0 ABS

Heat Resistor



SEC-Heat-Resistor

Replacement for the sampling point with heating HEAT X.X PVC/ABS.

Technical data

Resistor:	220 Ω
-----------	-------

Cable connection fitting



SEC-CCF-25-PVC

SEC-CCF-25-ABS

Cable connection fitting set for T-junctions of the tubes in deep-freeze rooms.

Technical data

Pipe connection diameter:	25 mm
---------------------------	-------

Silicon litz wire



SEC-SLW-0.5-wt (white)

SEC-SLW-0.5-bk (black)

Silicon litz wire 0.5mm² to connect the heating resistors in the heating nozzles HEAT X.X PVC/ABS.

Order quantity must be a multiple of 100.

Technical data

Length:	1 m
Packaging unit:	100 pieces

Wiring connection unit



SEC-WCU-535

For the introduction of the supply of the sampling point with heating into the aspirating tube, with internal clamps. For more details please see the guidelines for deep freeze-warehouses.

Technical data

Dimensions (H x W x D):	80 x 82 x 85 mm
Material:	PC
Pipe connection diameter:	25 mm
Weight:	317g

NOTE: A full range of ASD pipes and fitting are available.



Manual ball valve

SEC-MV-25-PVC

SEC-MV-25-ABS

Manual ball valve for revision and cleaning works with compressed air.

Technical data

Material:	PVC
Pipe connection diameter:	25 mm



Detector Box

SEC-REK 511

For the localization of a fire in a separate room, when a single SEC-ASD is monitoring several rooms. To use together with the SSD 515-Xs smoke detector. Has to be installed in every stub, which leads to a single room from the main tube.

Technical data

Operating voltage:	18-28 VDC
Ambient temperature:	0 °C to + 50 °C
Dimensions (H x W x D):	186 x 122 x 85 mm

Scattered light smoke detector for SEC-REK 511

SEC-SSD-515-1S sensitivity 1.2%/m

SEC-SSD-515-2S sensitivity 0.6%/m

SEC-SSD-515-3S sensitivity 0.3%/m

Technical data

Operating voltage:	18 to 28VDC
Ambient temperature:	-20 °C to + 60 °C
Protection class:	IP 44
Case colour:	white
Dimensions (D x H):	80 x 56mm

The SSD 515-xS (Scattered Light Smoke Detector) is the smoke sensor for the accessory device SEC-REK 511 (full addressing) for the Aspirating Smoke Detector of the SEC-ASD and RAS product family. The SSD 515-xS operates according to the scattered light principle and is designed so that it optimally meets the specific requirements of smoke detection in association with an Aspirating Smoke Detector. The detector has alarm threshold tracking and is additionally available with various sensitivities. By choosing the appropriate detector sensitivity, application-specific detection properties of the Aspirating Smoke Detector are possible.



Filter box small

SEC-FBS-25-PC

Filter box small including filter-mat. Inserted into the sampling pipe before SEC-ASD. To be used in slightly dusty rooms.

Technical data

Dimensions (H x W x D):	80 x 82 x 85 mm
Material:	PC
Pipe connection diameter:	25 mm



Filter mat small for filter box small

SEC-FBS-25-PC-EFM-5er

Filter-mat for filter box small. Packaging of 5 pieces

Technical data

Dimensions (H x W x D):	80 x 80 x 20 mm
-------------------------	-----------------



Filter box large

SEC-FBL-25-PC

Filter box large including filter-mat. Inserted into the sampling pipe before SEC-ASD. To be used in dusty rooms.

Technical data

Dimensions (H x W x D):	120 x 122 x 85 mm
Material:	PC
Pipe connection diameter:	25 mm



Filter mat large for filter box large

SEC-FBL-25-PC-EFM-5er

Replacement filter mat for the filter box large. Packaging of 5 pieces

Technical data

Dimensions (H x W x D):	117 x 80 x 80 mm
-------------------------	------------------



Filter box extra large

SEC-FBX-25-PC

Filter box extra large including 2 filter-mats and 1 holder for the filter-mat. Inserted into the sampling pipe before SEC-ASD. To be used in very dusty rooms.

Technical data

Dimensions (H x W x D):	250 x 160 x 90 mm
Material:	PC
Pipe connection diameter:	25 mm



Filter mat for filter box extra large

SEC-Filter-Mat-X

Filter-mat for filter box extra large. Packaging of one piece.

Technical data

Dimensions (H x W x D):	155 x 85 x 65 mm
-------------------------	------------------



Holder for Filter-Mat X

SEC-Holder-Filter-Mat-X

1 holder is included in the FBX 25 PC for the filter-mat at the bottom side.



Dust filter unit large

SEC-DFU-535L

Dust filter unit large. To be used in dusty rooms. Inserted into the sampling pipe before SEC-ASD.

Technical data

Dimensions (H x W x D):	165 x 220 x 220 mm
Material:	steel 37, black
Pipe connection diameter:	40/25 mm
Weight :	1600g



Replacement cartridge for DFU 535L

SEC-DFU-535L-RC

Replacement cartridge for dust filter unit large.

Technical data

Weight :	170g
----------	------



Dust filter unit extra large

SEC-DFU-535XL

Dust filter unit extra large. To be used in very dusty rooms. Inserted into the sampling pipe before SEC-ASD.

Technical data

Dimensions (H x W x D):	230 x 250 x 250 mm
Material:	steel 37, black
Pipe connection diameter:	40/25 mm
Weight:	2000g



Replacement cartridge for DFU 535XL

SEC-DFU-535XL-RC

Replacement cartridge for dust filter unit extra large.

Technical data

Weight :	520g
----------	------



Water retaining box

SEC-WRB-25-PVC

SEC-WRB-25-ABS

Water retaining box standard
Used in rooms with high humidity.
Inserted into the sampling pipe before
DTB 25 PC (when used), any types of
dust filters (when used) and SEC-ASD.

Technical data

Dimensions (H x W x D):	335 x 250 x 90 mm
Material:	PC
Pipe connection diameter:	25 mm



Air cooler and water separator

SEC-LK-35-PVC

SEC-LK-35-ABS

Is used as an air cooler when the
sampling pipe is in a room >60°C.
Can also be used as a water separator
in rooms with high amount of air
humidity and / or condensing water
because of temperature differences.
For more details see the technical
documentation.

Technical data

Dimensions (H x W x D):	1000 x 730 x 80 mm
Material:	Copper pipe d=22x1 mm
Weight:	8 Kg
VdS-Approval:	G208154
CPD-Approval:	0768-CPD-20600



Detonation flame arrester

SEC-DFA-25-3

Detonation flame arrester for explosion zones.
Equipment category IIC. 2 pieces are needed
per sampling tube. For more details see the
technical documentation.

Technical data

Pipe connection diameter:	25 mm
---------------------------	-------



Detonation flame arrester

SEC-DFA-25-2

Same as DFA 25-3 but equipment category IIB.

Technical data

Pipe connection diameter:	25 mm
---------------------------	-------



Detonation flame arrester

SEC-DFA-25-1

Same as DFA 25-3 but equipment category IIA.

Technical data

Pipe connection diameter:	25 mm
---------------------------	-------



Noise reduction housing

SEC-Insulation-housing

The noise insulation housing is used as an
accessory part for the aspirating smoke
detector ASD 535 in areas where a low level
of noise is required. If the ventilator noise
from the aspirating smoke detector is found
to be disruptive and changing the location of
the evaluation unit is not possible, the
aspirating smoke detector can be integrated
into a noise insulation housing.

Technical data

Sound pressure level:	20 dB (A)
Dimensions (H x W x D) :	500 x 500 x 300 mm
Material:	Steel sheet
Weight :	21,5 kg
Protection class:	IP 54



Additional housing for SecuriRAS SEC-ASD-535

SEC-ASD-Housing-Ex

The additional housing is designed for the
integration of an aspirating smoke detector
SEC-ASD-535. The additional housing
should be used as additional personal
protection in explosive areas. If there is
danger of operations related damage (e.g.
lift truck operations) to the aspirating smoke
detector, the additional housing can serve
as a mechanical protection measure.

Technical data

Material:	Steel sheet
Dimensions (H x W x D):	500 x 500 x 300 mm
Weight:	21 kg
Protection class:	IP 54



Main board for SEC-ASD-531

SEC-AMB-31

Repair exchange for the SEC-ASD-531.

Technical data

Dimensions (H x W x D): 250 x 160 x 15 mm



Main board for SEC-ASD-532

SEC-AMB-32

Repair exchange for the SEC-ASD-532.

Technical data

Dimensions (H x W x D): 250 x 160 x 15 mm



Main board for SEC-ASD-535-1 and -3

SEC-AMB-35-1

Repair exchange for the SEC-ASD-535-1 and -3.

Technical data

Dimensions (H x W x D): 125 x 176 x 20 mm



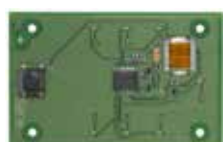
Main board for SEC-ASD-535-2 and -4

SEC-AMB-35-2

Repair exchange for the SEC-ASD-535-2 and -4.

Technical data

Dimensions (H x W x D): 125 x 176 x 20 mm



Basic control board for standard display of SEC-ASD-535-1 and -2

SEC-BCB-35

Repair exchange for the standard display unit (without smoke level display)

Technical data

Dimensions (H x W x D): 90 x 59 x 9 mm



Basic control board for advanced display of SEC-ASD-535-3 and -4

SEC-ACB-35

Repair exchange for the advance display unit (with smoke level display)

Technical data

Dimensions (H x W x D): 90 x 142 x 9 mm



Air flow sensor for SEC-ASD-531 and SEC-ASD-532

SEC-AFS-32

Repair exchange for air flow sensor for SEC-ASD-531 / 532 incl. connection wire



Air flow sensor for SEC-ASD-535

SEC-AFS-35

Repair exchange for air flow sensor for SEC-ASD-535 incl. connection wire

Technical data

Dimensions (H x W x D): 15 x 14 x 115 mm



Aspirating fan unit for SEC-ASD-531 and SEC-ASD-532

SEC-AFU-32

Repair exchange for the aspirating fan unit complete for SEC-ASD-531 / 532



Aspirating fan unit for SEC-ASD-535

SEC-AFU-35

Repair exchange for the aspirating fan unit complete for SEC-ASD-535.

Technical data

Dimensions (H x W x D): 138 x 185 x 58 mm



Rotary Snap Lock for SEC-ASD-531/532/535

SEC-RSL-35

Repair exchange for the SEC-ASD-531/532/535 housing.

Technical data

Material: ABS / steel

Packaging unit: 4 pieces



Insect protection screen for SEC-ASD-531/532/535

SEC-IPS-35

Insect protection screen for the SEC-ASD-531/532/535 housing.

Technical data

Material: steel

Packaging unit: 2 pieces